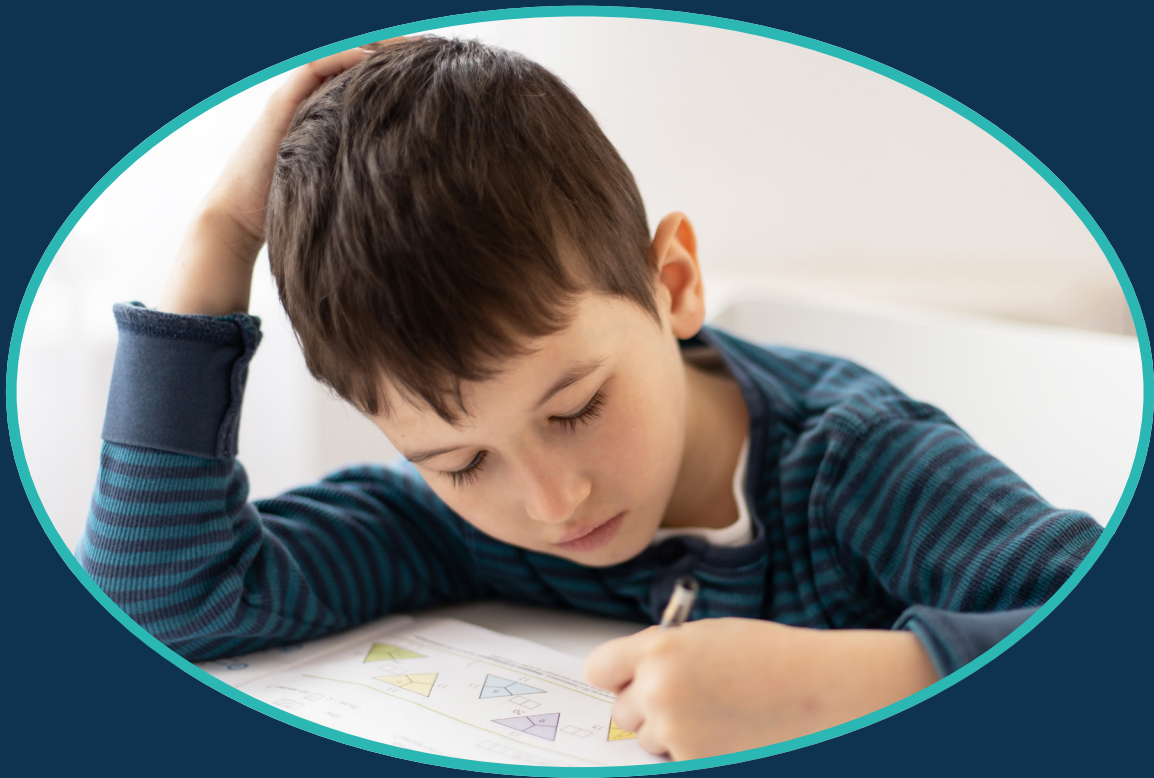


Life Chance. Care



Specialist Support for SEND Pupils

Established expertise - providing an outreach provision for staff supporting children who are experiencing difficulties in their educational setting.

Specialist Support for SEND Pupils

The Life Chance Care service is co-ordinated from two sites in South Devon, and utilises in-house expert SEND, Trauma Informed and MDT teams with a wealth of experience supporting children (5-16) who through perceived challenging behaviour are unable to manage in a mainstream setting and are facing or have faced exclusion.

The fundamental aim of Life Chance Care outreach is to support the inclusion of students with special educational needs. There is an emphasis on improving outcomes for these young people within school and beyond, and providing staff with the support to be confident in their approach to pupils with additional needs.

The schools we work with are involved in a broad range of collaborative activities to support this aim, and our focus is on sharing the skills and expertise we have developed from running an award winning SEMH Trauma Recovery day school in Devon since 2014.

Your staff will be part of a collaborative approach to providing quality-first teaching, using relational behavioural techniques and practices that have been proven 'best in class' across the UK and beyond to support students who are facing possible exclusion or suspensions.



Our purpose

Nowhere is Britain's social mobility failure more obvious than in the example of school exclusion in England - and in Devon we have one of the highest proportions of excluded children to population. (gov.uk regional exclusion and suspension data - Autumn Term 2022)

This problem is much bigger than previously recognised. As mental ill-health in young people rises, more children are subject to interaction with social care services each year, and so more vulnerable children spill into alternative provision. Too often this path leads them straight from school exclusion to social exclusion.

Recent data from gov.uk shows that the most common reason for suspension and permanent exclusion was persistent disruptive behaviour - but at Life Chance, we understand that behaviour is a communication of unmet need.

Our outreach provision is designed to collaborate, share learning and equip schools and staff with strategies, training, interventions and support to enable more students to remain and flourish in mainstream settings.

Excluded children are:

- Often the most vulnerable
- More likely to have experienced Adverse Childhood Experiences
- 2 x as likely to be in state care
- 4 x more likely to be growing up in poverty
- 7 x times more likely to have a special educational need
- 10 x more likely to experience mental health problems
- Overall, more likely as adults to be unemployed, develop severe mental health problems and/or go to prison.

Our Outreach Provision

The support provision we provide has a core offering for all schools. In addition, we can work with your school to look at the following levels of support you may want to access:

Step 1:

Observation visit and strategy / solution report with follow-up impact visit.



Step 2:

- Direct Intervention/Support in school or training
- Individual/group/whole school
- Visits to specialist setting to observe strategies & approaches in practise
- Joint planning
- Modelling of techniques and strategies
- Resource or equipment loans



Step 3:

Bespoke package - a menu of additional support can be arranged to suit individual or group requirements. Please contact our Outreach Co-ordinator for more information.



We also offer professional training:

Our half and whole day workshops can be arranged for your team onsite, online or at our training venue in Newton Abbot. We also run group sessions in Exeter in association with South West Institute for Teaching. Please check our website for upcoming dates and booking details.

- Intro to Trauma Aware Practice
- Introduction to Mental Health
- Assessing & Managing Risk in Mental Health
- The Impact of Caring
- The link between Physical & Emotional Wellbeing
- Trauma Friendly Transitions
- Quality First Teaching
- Trauma Informed Curriculum
- Safeguarding Through a Trauma-Informed Lens



www.lifechance.org.uk/life-chance-training



**Next steps - for more
information or to book:**

info@lifechance.org.uk

01626 244086

www.lifechance.org.uk/life-chance-care/

College House,
Ashburton Road
Newton Abbot,
Devon TQ12 1NH

Life Chance. *Transforming life chances in our communities.*

Life Chance Group is an award-winning organisation that brings together professional staff, therapeutic disciplines, and a forward-thinking approach to offer a range of services that provide holistic support for young people, families and our wider community.

Life Chance Education (School for Inspiring Talents) has two sites in South Devon, hosting a team of amazing teachers, learning support assistants and multi-disciplinary practitioners who support our young people who have experienced Adverse Childhood Experiences, within this therapeutic setting.

Life Chance Care is an assessment service for families and schools, providing a service for children struggling with their social, emotional and mental health needs. Our vision for supporting wider communities is to provide outreach help to schools and other agencies across the South West.

Life Chance Training shares the best practice and hands-on knowledge that our team of experienced staff have gained from supporting children. We've provided our training service to over 60 schools and universities.

Life Chance Trust is our charitable project, helping 16-25 year-olds reintegrate into the community and be the best they can be for the future, by providing funding, mentoring, training or vocational support.